

S.W. COR SEC 22, T18N, R68W

062661

RECEIVED
LARAMIE COUNTY
CHEYENNE, WY.

CERTIFIED LAND CORNER RECORDATION '89 OCT 5 PM 3 59

DESCRIPTION OF CORNER EVIDENCE FOUND, AND ORIGINAL RECORD (if known)

FOUND ORIGINAL GRANITE STONE w/ = (2) chisel MARKS ON SOUTH EDGE
& ≡ (3) chisel MARKS ON EAST FACE. SLIGHTLY LAID OVER TO THE WEST.
ACCEPTED AS THE CORNER.

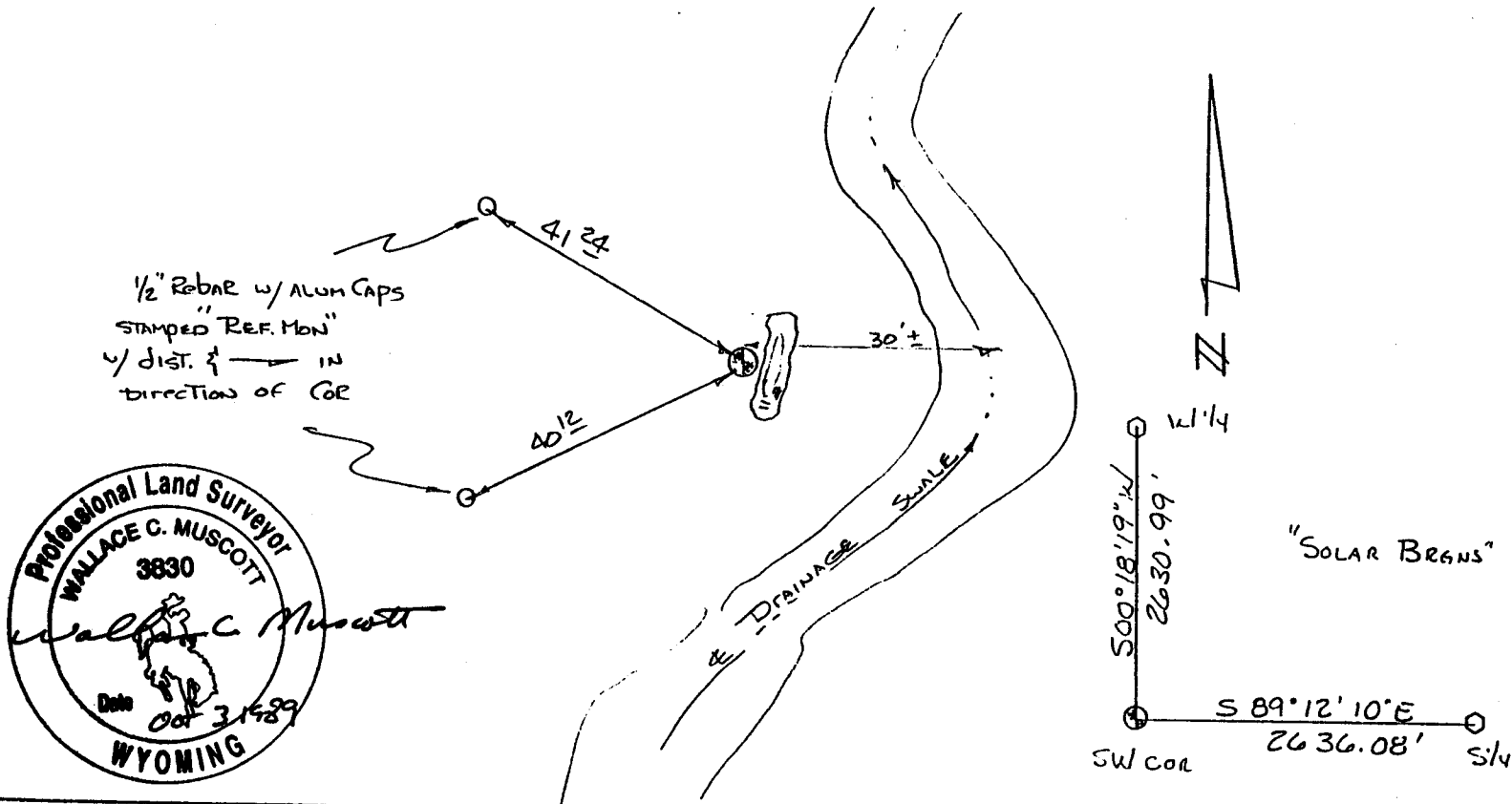
DESCRIPTION OF MONUMENT AND ACCESSORIES ESTABLISHED
TO PERPETUATE THE ORIGINAL LOCATION OF THIS CORNER:

IN PLACE OF THE ORIGINAL COR. SET A 5/8" x 30" REBAR w/ A CORP OF ENGINEERS
BRASS CAP AT THE TOP, FLUSH w/ GROUND AND STAMPED T18N, R68W
PLACED ORIGINAL STONE ALONG EAST SIDE &
RAISED A MOUND OF STONE.
TIED OFF AS SHOWN BELOW

T18N, R68W
S 21 | S 22
S 28 | S 27
1989

MAY 15 1989

SKETCH, WITH COURSE AND DISTANCE TO ADJACENT CORNER IF DETERMINED IN THIS SURVEY.
(May Sketch or Paste Reproduction on Reverse Side.)



I, Wallace C. Muscott certify that I have carefully performed or reviewed the work done on the diagrammed corner as reported on this recordation form and approve the same.

Wallace C. Muscott
Signature of Surveyor

3830
Registration No.

STATE OF WYOMING,
Office of Clerk and Recorder,
County of _____

This "corner record" was filed for record on the _____ day of _____, 19____, was noted on the cross-index plat and is assigned page No. _____, in book No. _____.

County Official			
Cross Index No. <u>R-13</u>	T. <u>18N</u>	R. <u>68W</u>	Mer. <u>60th</u>
_____	T. _____	R. _____	Mer. _____
_____	T. _____	R. _____	Mer. _____
_____	T. _____	R. _____	Mer. _____
_____	T. _____	R. _____	Mer. _____
_____	T. _____	R. _____	Mer. _____
_____	T. _____	R. _____	Mer. _____
_____	T. _____	R. _____	Mer. _____

BOOK 1278

1470